

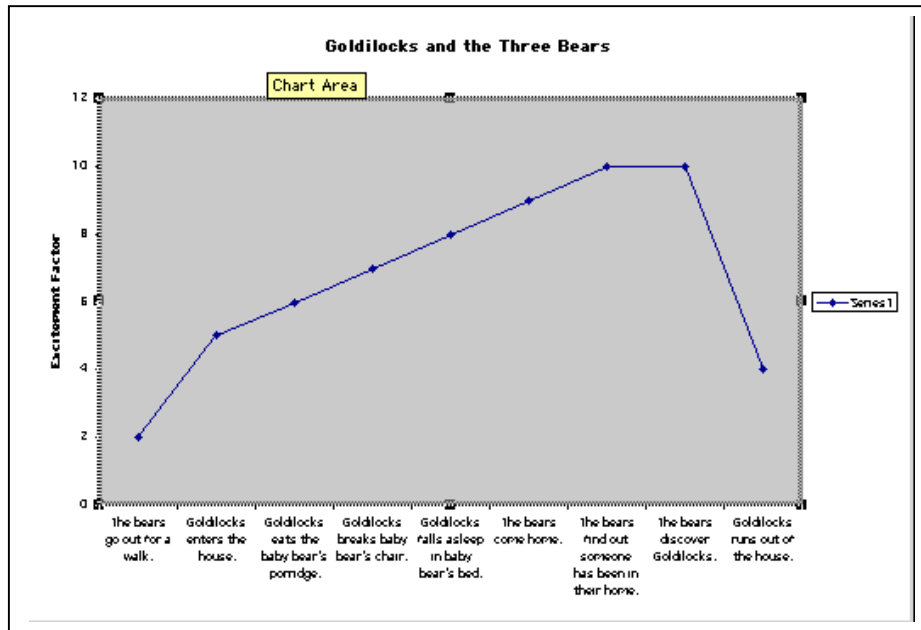
# Using Technology to Support Reading Best Practices

## Story Plot Graph



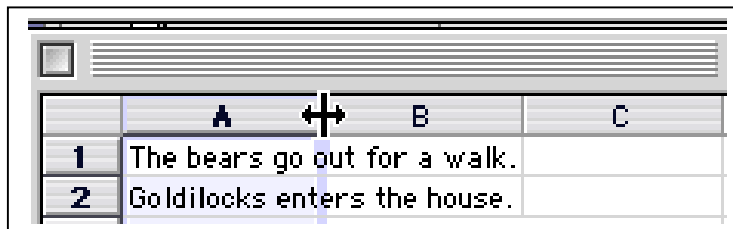
Excel Lesson Plan

Grade Levels: 2-8



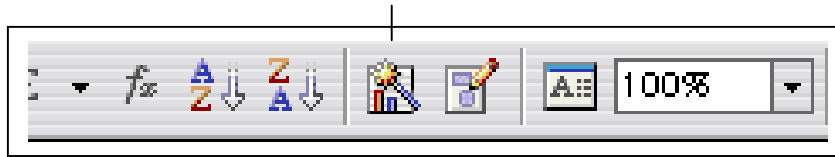
*Create a line graph to analyze the action of a story using Excel's easy to use Chart Wizard.*

1. In a blank Excel worksheet, position the cursor in cell A1.
2. Type the first event in the story. Then press Return.
3. Type the second event in the story and press Return.
4. Continue entering the major events of the story into new cells in column A.
5. Expand the size of column A. Position the cursor on the line between column A and column B. Double click on this line to automatically resize column A.

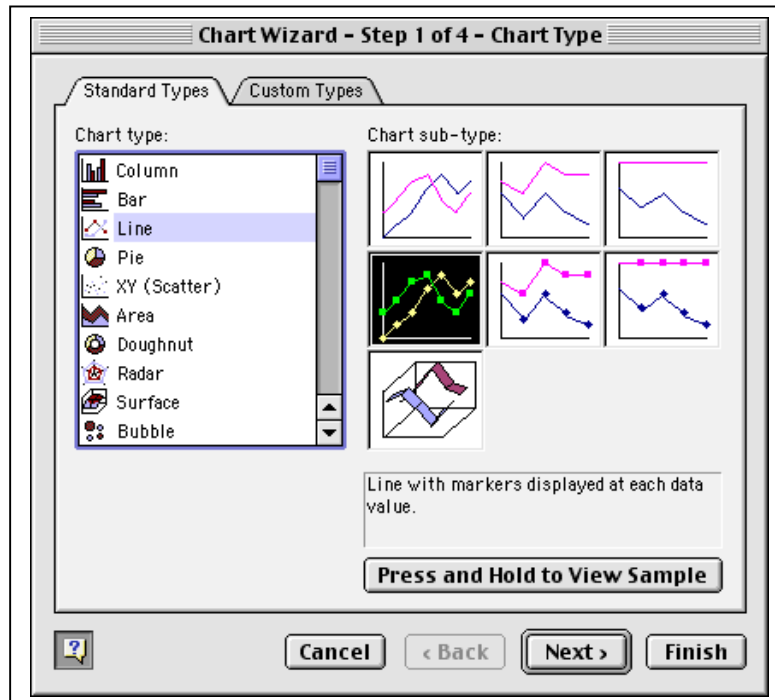


6. Position the cursor in cell B1.
7. On a scale of 1-10 (1 – low, 10 – high), enter the “excitement factor” of the first event of the story. Press Return.
8. Continue entering values into the other cells in column B.

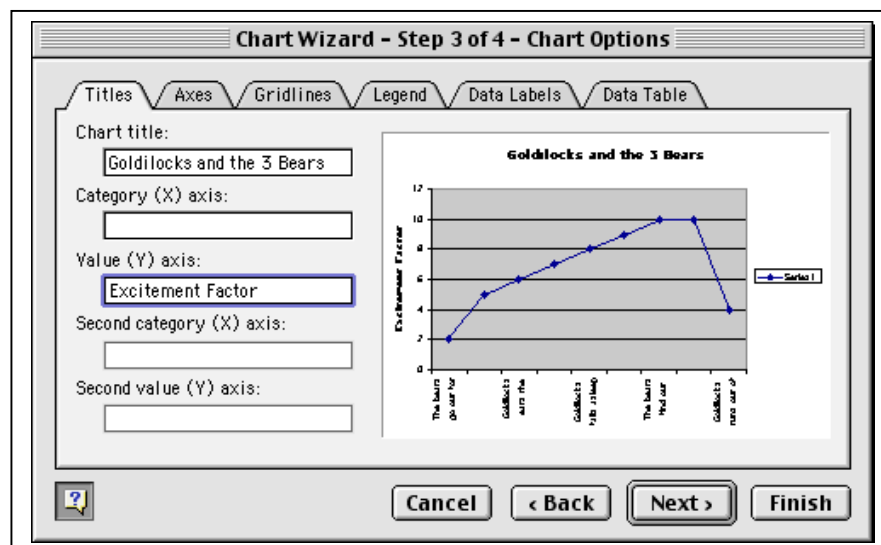
- Click on the graphing tool on the toolbar.



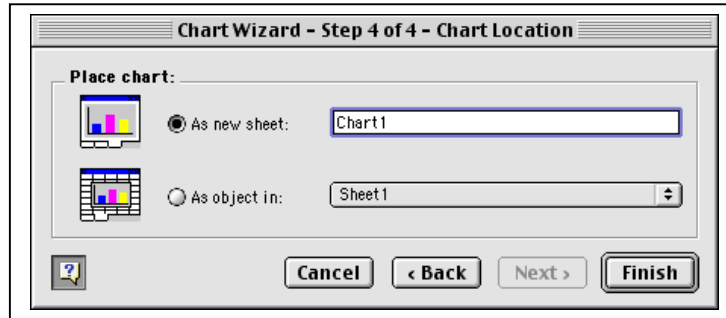
- You will use the Chart Wizard to construct the story plot graph. In Step 1 of 4 – Chart Type, choose a Line graph. Then click Next.



- In Step 2 of 4 – Chart Source Data, click Next.
- In Step 3 of 4 – Chart Options, enter the Chart Title. For Value (Y) axis, enter Excitement Factor. Then click Next.



13. In Step 4 of 4 – Chart Location, choose As new sheet. Then press Finish.



14. Print the graph in landscape mode.